



POSIFLEX | **AIDC**

Posiflex was established in 1984 and listed its IPO in 2005. Started its subsidiary in India in 1997.
Its 2019 Group revenue is USD 500+ Mn. Worldwide Employees are 1340+ and 140+ in India.



6 subsidiaries
75+ distribution partners



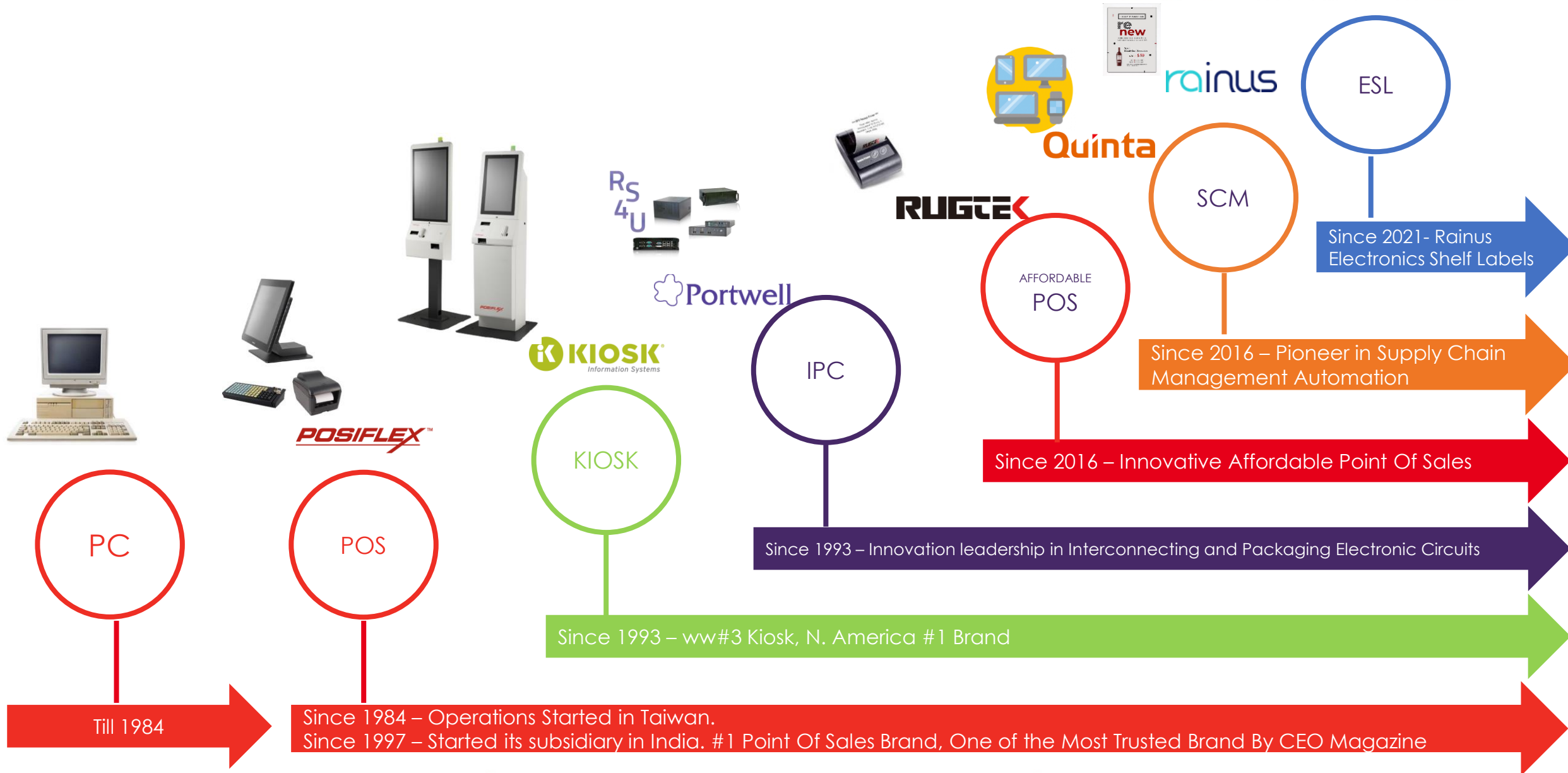
Subsidiaries
India, UK, Netherlands, Germany,
China, South Korea, Japan, Malaysia,
Singapore



**Head Office / Service /
Warehouse: Bangalore**

- 200+ Business Partners around 50 cities in India
- 150+ International Brands Trusts Posiflex in India
- 100000+ pos installed in retails and restaurants / hotels
- 60% market share
- 550+ support locations

1. Revolution Technology
2. Reliable Quality
3. Reasonable Price
4. Recognized Service



01

Retail

Applications – Modern Retail, Kirana Stores / Mom & Pop Stores, Hyper Market

Solution - POS terminals play a very important role in cutting down long billing queues and ensure a faster payment process. Also, designed to take up less space or no space by offering you the convenience of mobility and Bluetooth connectivity. Most of our products at Posiflex are IP65 rated and can withstand accidental falls.

Recommended Products – [XT4015](#), [HS2414W](#), [PS3316E+](#), [PP8800UB](#), [CR4000](#), [CD3200U](#), etc.

02

Hospitality

Applications – Restaurant, QSR, Resort/Hotels

Solution – A minute of lag may result in a customer behavior change. So our POS are guaranteed to work without any lag and assist you 24/7 with good processing speed and bigger memory (RAM). With IP65 rating, our products work well under accidental food or liquid spillage.

Recommended Products – [HS2415W](#), [KT3230/3250](#), [PS3316E+](#), [XT4015](#), [PP8802/8803](#), etc.

03

Healthcare

Applications – Hospitals, Clinics, Pharmacies, Gymnasiums

Solution – Our products improves the customer experience at multiple locations within the hospitals, with power of a touch, convenience, and seamless transactions. Our Mobile Point of Sale (MPOS) enables faster inventory count or asset tracking, assist in checking-in registration counters, and help inpatient care.

Recommended Products – [MT4310W](#), [MT4308W](#), [KT3230/3250](#), [PP8800UB](#), etc.

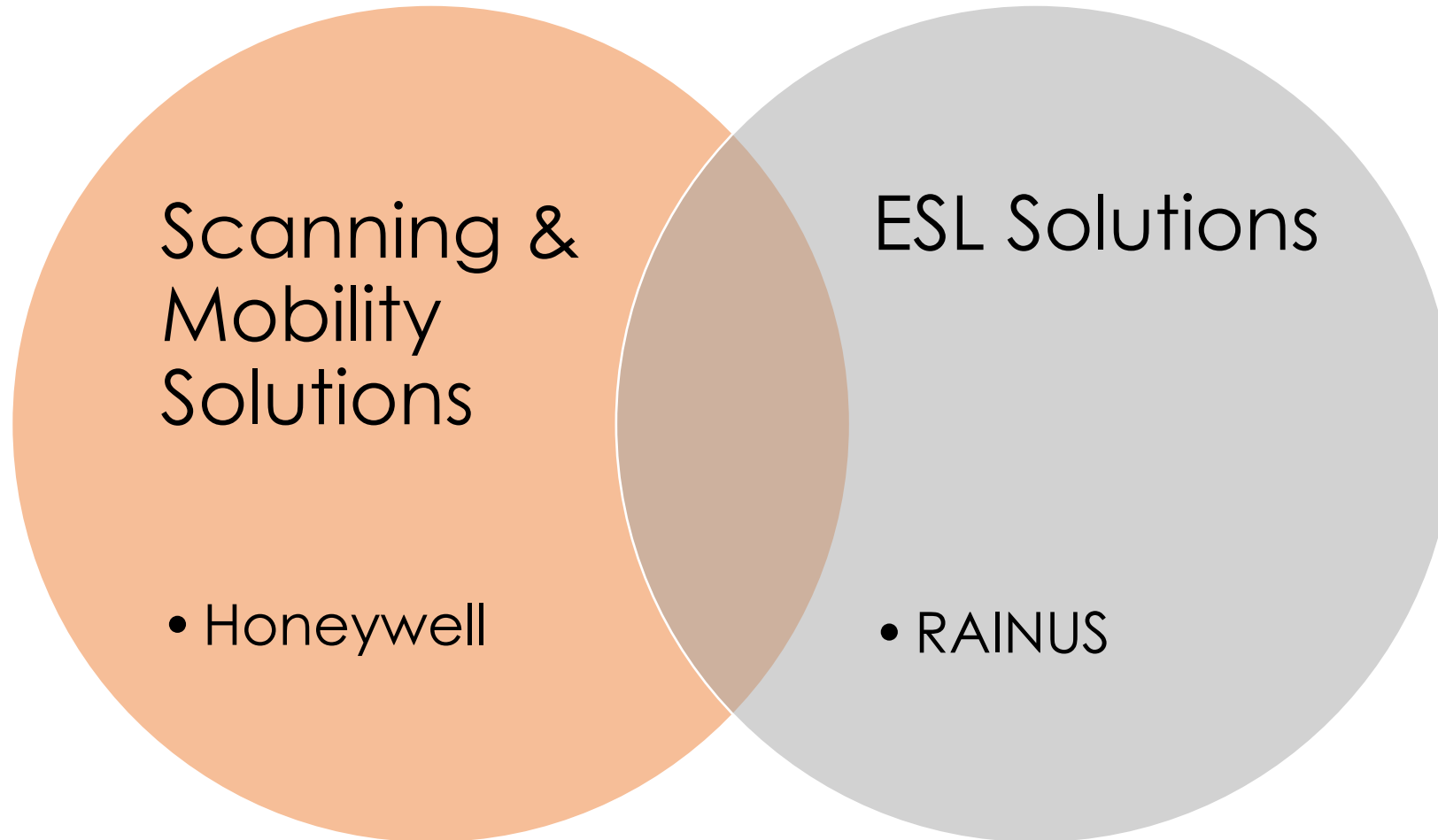
04

Manufacturing

Applications – WIP, Touch Monitors

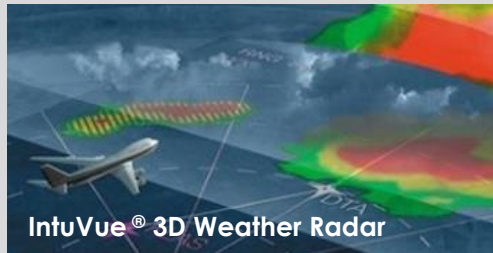
Solution – Our IP ratings, drop sustenance, reliable service works smoothly in all harsh operating conditions. The touch screen used for controlling machines and product quality inspection at manufacturing plants are some of the best examples for Posiflex's product catalogue.

Recommended Products – [CD3200BT](#), [XT3915IR](#), [TX5000](#), [MT4310](#), etc.



\$39.3B Global Industrial Company Serving Major Industries Globally

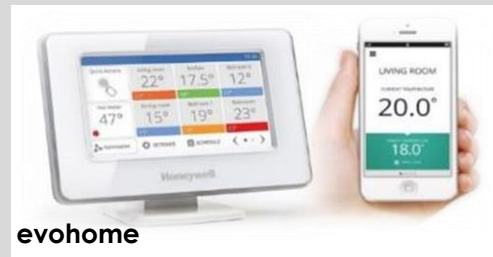
Aerospace



Connected
Aircraft And Auto

\$10.7B

Home and Building Technologies



Connecting
Homes & Buildings

\$4.6B

Safety And Productivity Solutions



Connecting Workers
And Workplaces

\$9.3B

Performance Materials And Technologies



Connected
Plants

Deep Knowledge And Strong Positions Across Major Segments

Reflects 2016 Full Year Results



\$1B

in domestic sales and exports

3000+

Products, solutions,
applications engineered

- ~15,000 employees, including 8,000 engineers
- **Eight decade** India legacy
- 7 manufacturing facilities
- 5 global technology development centers



Aerospace



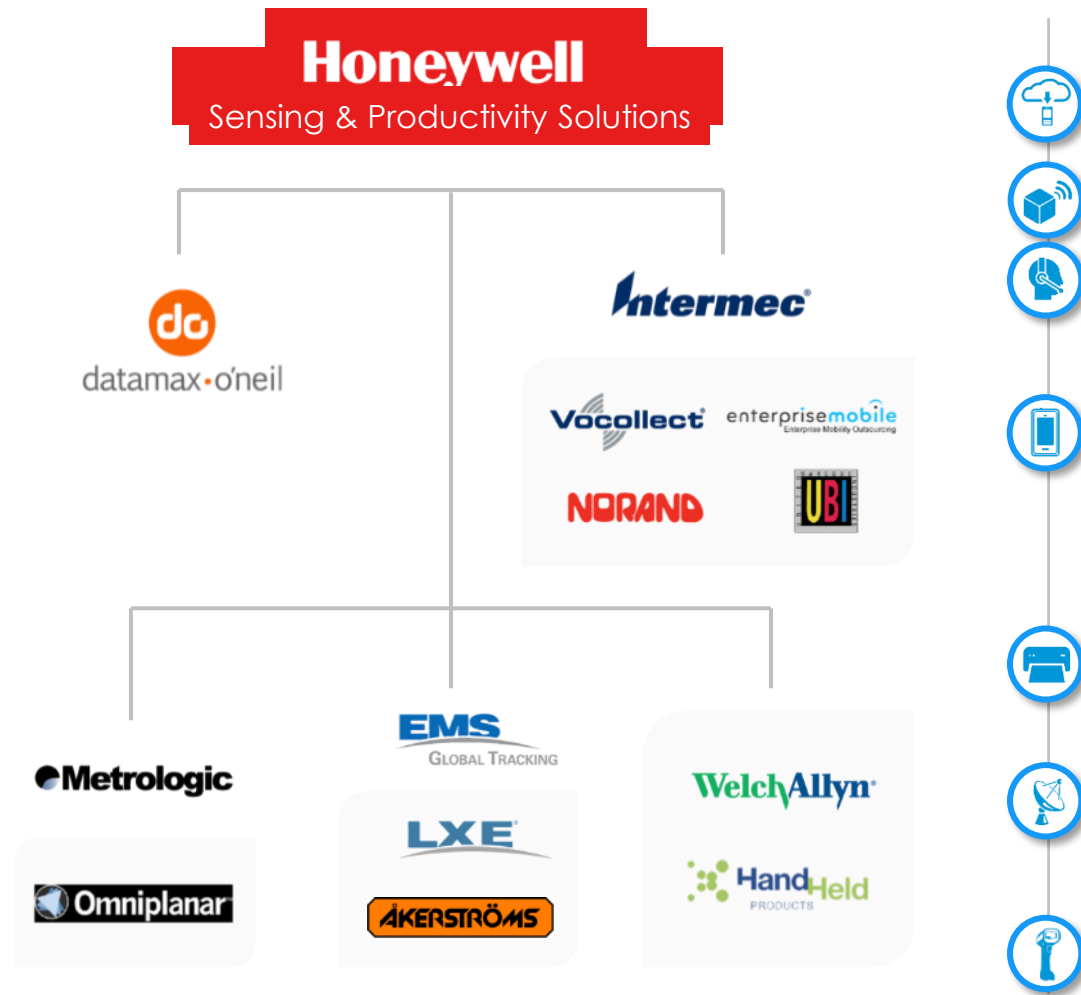
**Performance Materials
and Technologies**



**Home and Building
Technologies**



**Safety and
Productivity Solutions**



- 2016: Honeywell acquires Movilizer and Intelligated
- 2015: Honeywell acquires Datamax O'Neil
becomes Sensing & Productivity Solutions
- 2013: Honeywell acquires Intermec
- 2011: Honeywell acquires EMS/LXE
- 2011: Intermec acquires Vocollect & Enterprise Mobile
- 2008: **Honeywell Imaging and Mobility**
- 2008: Honeywell acquires Metrologic
- 2007: Honeywell acquires Hand Held Products and develops the Honeywell Imaging & Mobility division
- 2007: EMS acquires DSpace & Akerstroms
- 2004: Metrologic acquires Omniplanar
- 1999: Welch Allyn merges with Hand Held Products
- 1997: Intermec acquires Norand and UBI
- 1987: Vocollect is founded
- 1970: EMS develops LXE, Digital Products Division
- 1968: EMS is founded
- 1968: Metrologic is founded
- 1966: Intermec is founded
- 1965: Data Capture division of Welch Allyn is founded

General Purpose

Laser
Eclipse 5145

Linear
Voyager 1250g

Linear Imager
Hyperion 1300g

Area Imager
HH400

Area Imager
HH660

Area Imager
Voyager145X
Cordless option

Area Imager
Xenon 190X
Cordless option

Area Imager
Voyager 1602g

Area Imager
Xenon 19002BF
Cordless option
Battery Free

Industrial / Warehouse

Granit 1920i
IP65
DPM option

Granit 198xi
IP65
Cordless option

Granit 198xi
IP65
Cordless option

Bluetooth Ring Scanner **Laser / Imager**



8670

- 2D
- Single finger ring
- Bluetooth

Hands-Free - Retail

Laser
Orbit 7120

Area Imager
HF600

Hybrid
Orbit 7190

Area Imager
Genesis 7580

Area Imager
Vuquest 3320g

Area Imager
Solaris 7980g

Laser
Stratos 2400

Hybrid
Stratos 2700

Horizon 7600

General Purpose / Desktop



PC42D



PC43D / PC43T



E-Class Basic / Advance / Professional / Professional +

Mobile



APEX Series



PR Series



RP Series

Industrial / Warehouse



PD43/ PD43c

Boarding Pass



PM42

Full Touch LCD



M-Class MK II



PD41/ PD42

Die Cast Metal



PM23c



I-Class MK II



PM43/ PM43c

Smart Printing

High Performance

24*7



PX4i



PX6i



H-Class



A-Class

In-premise applications such as shop floor, warehouse and back-office operations



Dolphin 6110
• WEH 6.5
• 2.8" display



CK3R
• WEH 6.5
• RFID (optional)



CK3X
• WEH 6.5
• Near-far scanning option
• RFID (optional)



EDA60K
• Android 7
• 1D laser / 2D imager scanning option



Dolphin 70e
• WEH 6.5/Android
• 4.3" display
• IP67
• Wi-Fi, GPRS



Dolphin 75e
• Android 4.4 / WE8.1H
• 4.3" display
• Hi2D engine
• Wi-Fi



Captuvo SL42
• iPhone 5
• N5600 engine
• Optional MSR



SL62
• iPad mini
• Optional MSR

Versatile devices



EDA50
• Android 7.0
• 5" display
• H12DA engine



EDA50K
• Android 7.0
• 4" display
• H12DA engine



EDA50K
• Android 7.0
• 7" display
• H12DA engine



Dolphin 60s
• WEH 6.5
• 2.8" display



CN51
• WEH 6.5/Android
• 4" display



CT50
• WEH 10/Android
• 4.7" display
• IP67
• LTE



CK75
• WEH 6.5/Android
• Near-far scanning option
• RFID (optional)



Dolphin 99EX/GX
• WEH 6.5
• 3.7" display



70 series
• WEH 6.5.3
• IP67
• RFIS Enabled

Vehicle Mount computers for Cargo and Yard applications



CV31
• WES
• 6.5" Display
• Cold Storage



Thor VM1
• Win CE / WES
• 7" Display
• Cold Storage



Thor VM2
• Win CE / WES / Win7
• 10" Display
• Smart-Dock



Thor VM3
• Win CE / WES / Win7
• 12" Display
• Smart-Dock

Specialty computers



Tecton MX7T
• Win CE 6.4, Win 6.5
• 3.5" display
• IP65
• (-10° to +50°C)



i.Roc Ci70
• ATEX
• Zones 1 & 21
• Optional RFID

rainus

POSIFLEX



POSIFLEX India has partnered with RAINUS as a National Distributor for sales & service across INDIA since 2021.



Posiflex was established in 1984 and listed its IPO in 2005. Started its subsidiary in India in 1997.

Its 2019 Group revenue is USD 500+ Mn. Worldwide Employees are 1340+ and 140+ in India.



6 subsidiaries
75+ distribution partners



Subsidiaries

India, UK, Netherlands, Germany, China, South Korea, Japan, Malaysia, Singapore



Head Office / Service / Warehouse: Bangalore

- 200+ Business Partners around 50 cities in India
- 150+ International Brands Trusts Posiflex in India
- 100000+ pos installed in retails and restaurants / hotels
- 60% market share
- 550+ support locations

Expertise +10 Years

Expertise over 10 years

RAINUS was established by core developers of industry leading ESL companies and IT experts in 2014.

With all the expertise and cumulated knowledge, RAINUS ESL Solution was distinctively acknowledged by the market with its outstanding performance.

Outstanding ESL Solution

Largest ESL Roll-out Record in Single Store

In 2019, RAINUS has deployed over 170K ESL in a single store for a retail customer.

Infortab, ESL solution of RAINUS, was proven to be the most powerful solution with its incomparable scalability and reliability optimized for the large scale retail environment.

Global Presence

Global Offices

Since the establishment in 2014, RAINUS has already expanded its presence by introducing global offices in Europe and Japan to be more interactive with the local market's needs.

RAINUS is planning to introduce more global offices around the world to provide enhanced supports on local needs.

Global Alliances and Partners

Provide Best Supports through Industry Experts

RAINUS values partnership, and works together with technology driven companies to offer best supports to the customers.

RAINUS will continuously collaborate with industry experts to introduce more innovative technologies to offer enhanced experiences to the customers.

E-Paper Label : Infortab

Smart Shelf : Infortab Plus

Retail Solution





- E-paper display with 2.4GHz RF
- Real-time update
- Full Graphics in 3 or 8 color
- LED flash
- NFC embedded
- Customizable label design
- Customizable bezel color



R13A: 13.3" (B/W/R)



R750: 7.5" (B/W/R)



R565: 5.65" (8 Color)
R583: 5.83" (B/W/R)



R420: 4.2" (B/W/R, B/W/Y, LED)



R310: 3.1" (B/W/R)



R290: 2.9" (B/W/R, B/W/Y, LED)
Freezer Tag (Monochrome)



R266: 2.66" (B/W/R, B/W/Y, LED)



R213: 2.13" (B/W/R, B/W/Y, LED)



R154: 1.54" (B/W/R, B/W/Y, LED)

23.1"



29.1"



in-Touch

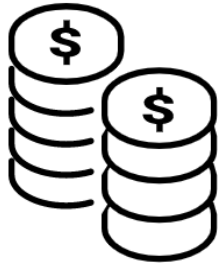


- Full color TFT LCD
- High definition
- Real-time update
- Multi-media display
- Dynamic Pricing
- Easy POG
- Centrally Controlled
- Wi-Fi and BLE
- Unified CMS UI with Infortab



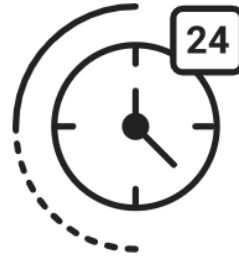
RAINUS solutions can meet your varied needs.

Use our technology to maximize the benefits of your business.



Cost Saving

Minimize space inefficiency of office furniture, including lockers, desks, and chairs. Maximize space utilization by freeing up space for your employees.



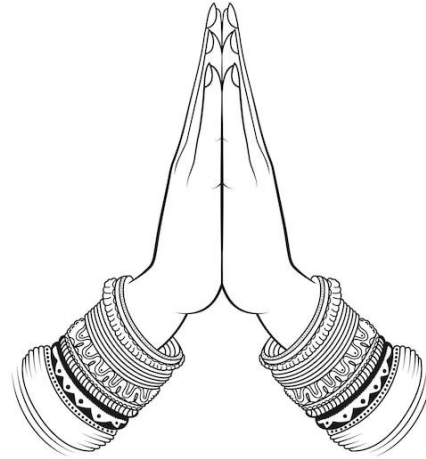
Work Efficiency

Easily reserve unassigned seats and workstations online via kiosk, wall pad, and mobile integration with electronic nameplates and lockers without the need for workforce staffing.



Efficient Operation

Improve the quality of work-life and productivity by providing comfortable, well-connected, and modernized offices with flexible work and gathering spaces.



THANK YOU

POSIFLEX | **AIDC**